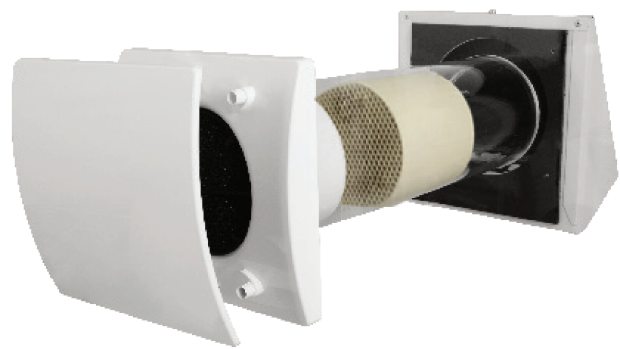


Heat Recovery Inside Wall

HRU-WALL

[Download Wentyle](#)  
[Download AlnorCAM](#)  
[Buy via B2B](#)



Description

HRU-WALL is a heat recovery unit, designed to ensure adequate ventilation in enclosed environments without energy losses. igh efficient reversible EC motor with integral thermal protection, mounted on sealed for life high quality ball bearings. Designed for continuous running. Regenerative heat exchanger with ceramic core; high thermal efficiency (up to 90%). Heat recovery unit HRU-WALL is available in two sizes: Ø100mm and Ø150mm. Alternate flow with flow reversal approx. every 70 seconds.

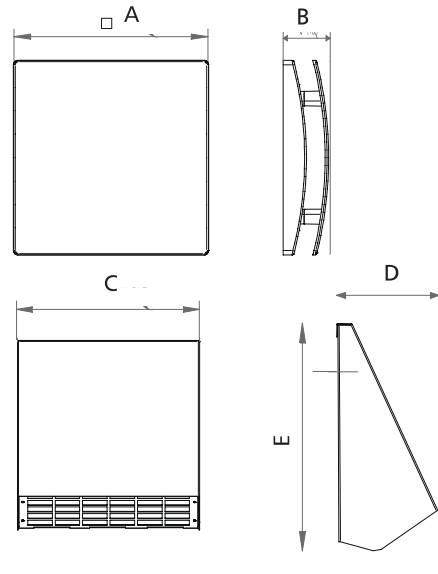
It is recommended that two units are installed in pair: when one unit is pulling, the other is pushing. Pair of units can be installed in the same room or in different rooms (i.e. living-room and bedroom). The unit is suitable for installation on an outside wall.

Attention:  
The unit should operate continuously, and only stopped for maintenance or service.

When heat exchange is not useful (for example in mid-seasons when indoor and outdoor temperatures are similar), or when heat exchange is not recommended (for example with the option "summer free cooling"), or it is requested to increase the acoustic comfort, or in case of extreme weather conditions (for example with strong wind or exceptionally rigid temperatures), it is recommended to set the unit in extract only mode (eventually at minimum speed) and NOT to switch it off.

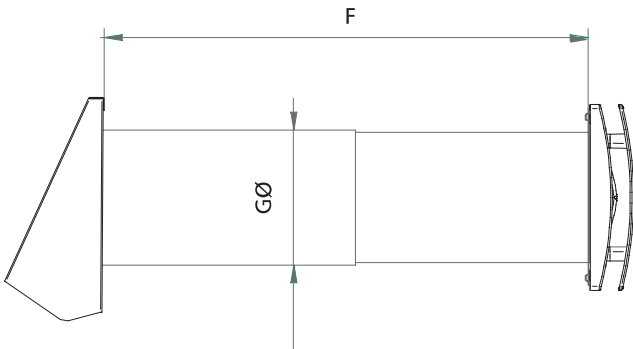
Ensure that the electric wiring is done correctly; an incorrect connection will lead to malfunction or permanent damage of the fan

Dimensions



External hood

type	A (mm)	B (mm)	C (mm)	D (mm)	E (mm)
HRU-WALL-100-25	164	46	205	103	209
HRU-WALL-150-60	218	51	252	114	262



type	F (mm)	G (mm)
HRU-WALL-100-25	270÷510	108
HRU-WALL-150-60	300÷560	158

Example identification

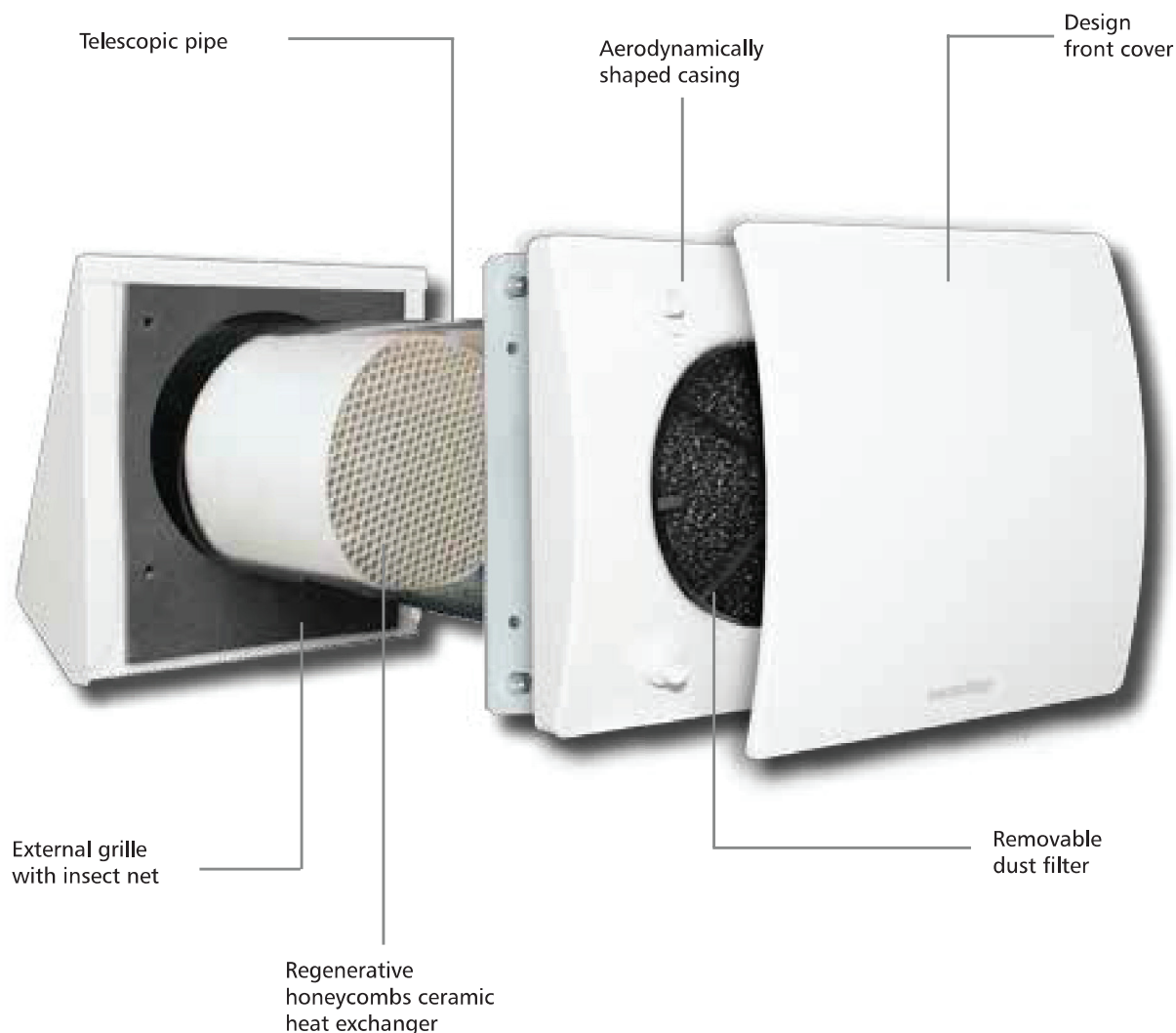
Product code: **HRU-WALL - 100 - 25**

type \_\_\_\_\_  
diameter \_\_\_\_\_  
efficiency \_\_\_\_\_

## Heat Recovery Inside Wall

**HRU-WALL**

[Download Wentyle](#)  
[Download AlnorCAM](#)  
[Buy via B2B](#)

**Construction****Technical Data**

Type	Airflow m <sup>3</sup> /h	Power W	Sound Pressure dB(A) 3m	Ambient temperature °C maks.	Weight Kg
HRU-WALL-100-25	10/15/25	1,2/1,7/2,6	10/15/29	-20° +50°	2,2
HRU-WALL-150-60	20/40/60	1,4/2,3/3,8	10/18/26	-20° +50°	4,5

Air performance measured according to ISO 5801 at 230V 50Hz, air density 1,2 Kg/m<sup>3</sup>  
Pressure sound level at 3m in free field  
Designed i manufactured in compialce with the norm EN60335-2-80